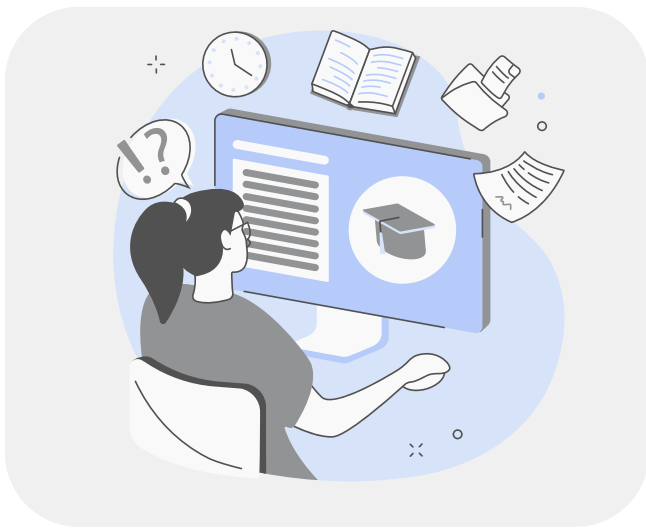


- A-Levels
- Vocational Qualifications
- T-Level
- Foundation course and/or Level 1-2 courses
- Apprenticeships
- Foundation Apprenticeships
- Alternative Academic Qualifications (AAQs)
- Technical Occupation Qualifications (TOQs)



Portsmouth Local Colleges

HSDC	● ● ● ● ●
City of Portsmouth	● ● ● ● ● ●
St Vincent College	● ● ● ● ●
Chichester College	● ● ● ● ●
Brinsbury College	● ● ● ●
Fareham College	● ● ● ●
Itchen College	● ● ● ●
Barton Peveril	● ●
Sparsholt College	● ● ● ●
UTC Portsmouth	● ● ●
Eastleigh College	● ● ● ●
Peter Symonds	● ● ● ●
Bay House Sixth	● ●
Military Mentors	● ●
Totton College	● ● ●
Bitterne Park Sixth Form	● ●
St Anne's Sixth Form	● ●
Richard Taunton Sixth Form College	● ● ● ●
Southampton College	● ● ● ●
Eastleigh College	● ● ● ●
Worthing College	● ● ● ●
Bishop Luffa	●

Considerations

- ✦ How will I travel to college each day?
- ✦ Which courses suit me best?
- ✦ How do I prefer to be assessed?
- ✦ What enrichment activities or clubs are available?
- ✦ When do I need to apply? Many colleges open applications in October and close between December and February, ensure you are aware when you need to apply by.

Tips for college:

- ✦ Research colleges. Visit colleges on their open days, attend taster sessions, and check out college websites. Make a short-list of courses and colleges you like.
- ✦ Check entry requirements. Course entry requirements can differ from college to college - be sure to double check these.
- ✦ Apply to a few colleges. Aim for at least 2 and be sure to accept your offers. This gives you flexibility and options should you change your mind. You will usually not need to make a final decision about your first choice of college until you get your GCSE results in August.
- ✦ Even if an apprenticeship is your first choice it is a good idea to apply to a full time college course that interests you. Apprenticeships are competitive - be sure to prepare a 'plan b'.
- ✦ If you are eligible for free school meals or your family receives extra support (e.g. benefits) you will likely be eligible for financial support at college under the Discretionary Bursary. All college websites will have a finance section and your parent or guardian will have to fill in a form.